

CERTIFICATE OF LOCATION OF GOVERNMENT CORNER

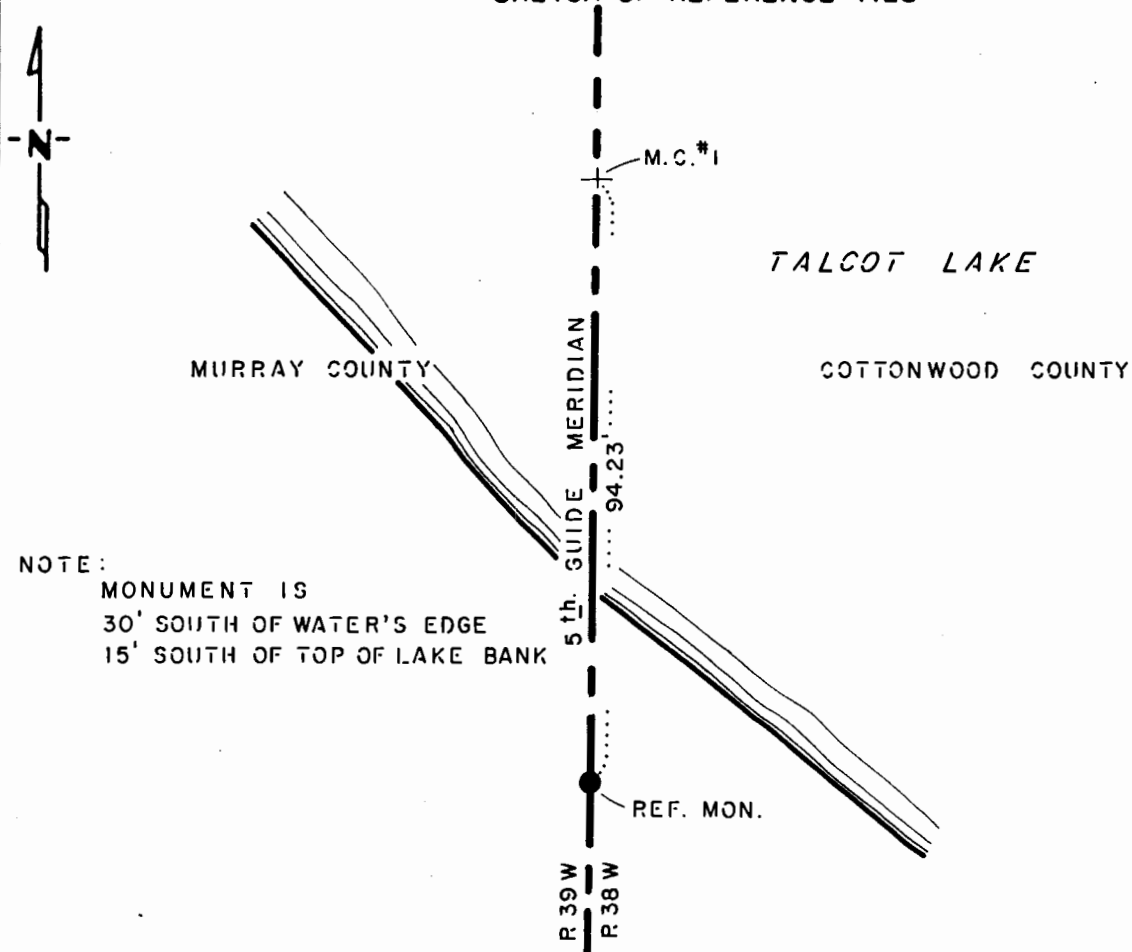
#1 MEANDER Corner of Section 25, Township 105 N., Range 39 W., 5th P.M.

STATE OF MINNESOTA, County of MURRAY

At the corner location shown on the sketch:

- On _____ found a _____
DATE
- left monument as found, lowered monument, removed monument (explain)
- On 6-24-85 placed a 1 1/4" x 1 1/4" x 20" PERFORATED STEEL TUBE WITH
DATE
ALUMINIUM CAP STAMPED "D.N.R. SURVEY MARKER", UP 0.3' AS REF. MON.

SKETCH OF REFERENCE TIES



NOTE:
 MONUMENT IS
 30' SOUTH OF WATER'S EDGE
 15' SOUTH OF TOP OF LAKE BANK

Statement of evidence relative to this corner location is on back of page.

J.B.M. 7-24-85
G-158

I hereby certify that this document and the data contained herein was prepared by me or under my direct supervision.

Bruce W. Shupard 12/20/85
SIGNATURE DATE

Registration No. 17003

- Land Surveyor, Professional Engineer
- County Surveyor, County Engineer

OFFICE OF THE COUNTY RECORDER

County of _____

I hereby certify that this document was filed in the Co. Recorders office at _____ .M. on the _____ day of _____ A.D., 19 _____

County Recorder _____

By _____, Deputy

DOCUMENT NO. _____

Meander Corner #1 of Section 25, Township 105 North, Range 39 West

This corner was originally established by the U. S. General Land Office survey in 1857. The government notes show corner marked with a wood post and a mound of stone. The notes also show corner 30.00 chains (1980.00 feet) North of the northeast corner of Section 36.

The government meander notes of lake in Section 19 and 30 of Township 105 North, Range 38 West show:

Could not find any of the meander corner posts noted on plats of township lines - they were either covered with water or washed out of places

In April 1983, the DNR Bureau of Engineering contacted the following for corner information:

Cottonwood County Offices of the Recorder and Highway Engineer
Murray County Offices of the Recorder and Highway Engineer
Sioux Engineering of Windom
Martin Land Surveying of Worthington

The following information was obtained from the Cottonwood County Recorder's Office:

Plat 49 contains a resurvey of Township 105 North, Range 38 West done by C. W. Gove, County Surveyor, in 1898. Plat shows that corner was established 1980 feet north of the southeast corner of Section 25. A 2½" by 1½" by 30" cast iron stake was set to mark this location.

The following information was obtained from the Office of Sioux Engineering:

A copy of a resurvey plat of Township 105 North, Range 38 West, obtained from Howard Boeck of Westbrook, and done by C. W. Gove, County Surveyor, in 1898, shows corner but does not indicate what was found or set. Corner is shown 1980 feet north of the southeast corner of Section 25.

The following information was obtained from the Cottonwood County Recorder's Office:

A resurvey plat of Township 105 North, Range 38 West, done by C. W. Gove, County Surveyor, in 1898, shows corner but does not indicate what was found or set. Corner is shown 1980 feet north of the southeast corner of Section 25.

In May 1983, the DNR Bureau of Engineering traversed to the area of the corner and found its location to be in Talcot Lake. Then the lost position for corner was computed using the northeast corner of Section 36 and the east quarter corner of Section 24.

Accept the lost position as the location of the corner.

Traverse information is available from the DNR Bureau of Engineering.

68hab